


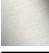












10 126 970

- Min Beckendicke 5/8"
- nicht zum Verschließen

Nur für Becken ohne Überlauf geeignet.

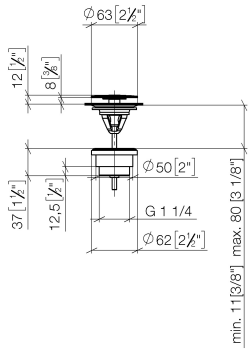


Passt zu: MEM, LULU, CL.1, IMO, TARA,  
LISSÉ, MADISON, VAIA, META, CYO

	Chrom	10 126 970-00
	Platin gebürstet	10 126 970-06
	Platin	10 126 970-08
	Messing (23kt Gold)	10 126 970-09
	Dark Chrome	10 126 970-19
	Light Gold	10 126 970-26
	Light Gold gebürstet	10 126 970-27
	Messing gebürstet (23kt Gold)	10 126 970-28
	Schwarz matt	10 126 970-33
	Bronze gebürstet	10 126 970-42
	Champagne gebürstet (22kt Gold)	10 126 970-46
	Champagne (22kt Gold)	10 126 970-47
	Chrom gebürstet	10 126 970-93
	Dark Platinum gebürstet	10 126 970-99

10 126 970

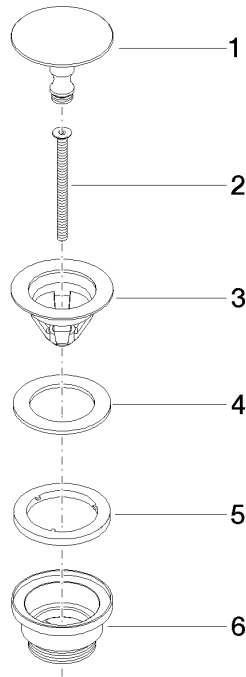
mm [inches]



10 126 970

**Produktversion ab 10/1/2023**

Ersatzteile für die  
anderen  
Oberflächenvarianten  
finden Sie hier: Platin  
gebürstet





## Ablaufgarnitur ohne Druckverschluss 1 1/4" - Chrom

MEM

10 126 970

### Ersatzteilstückliste

#### Produktversion ab 10/1/2023

Nr.	Artikelnummer	Benennung	Verbaumenge	Lieferzeit
	09 31 20 097-00	Stopfen Ø 63 x 48 mm - Chrom	6	10