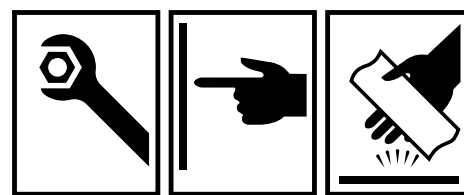
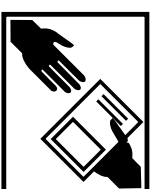
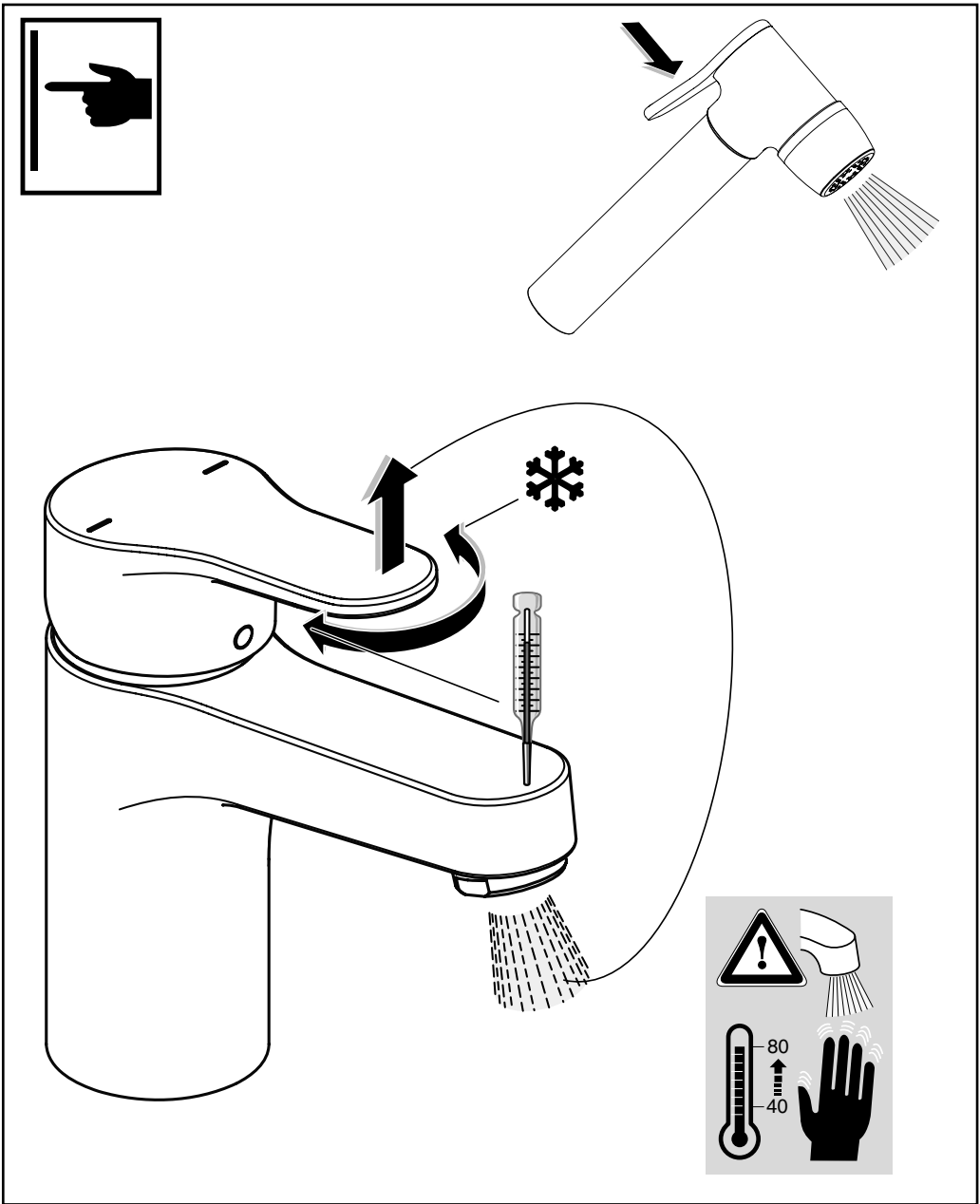
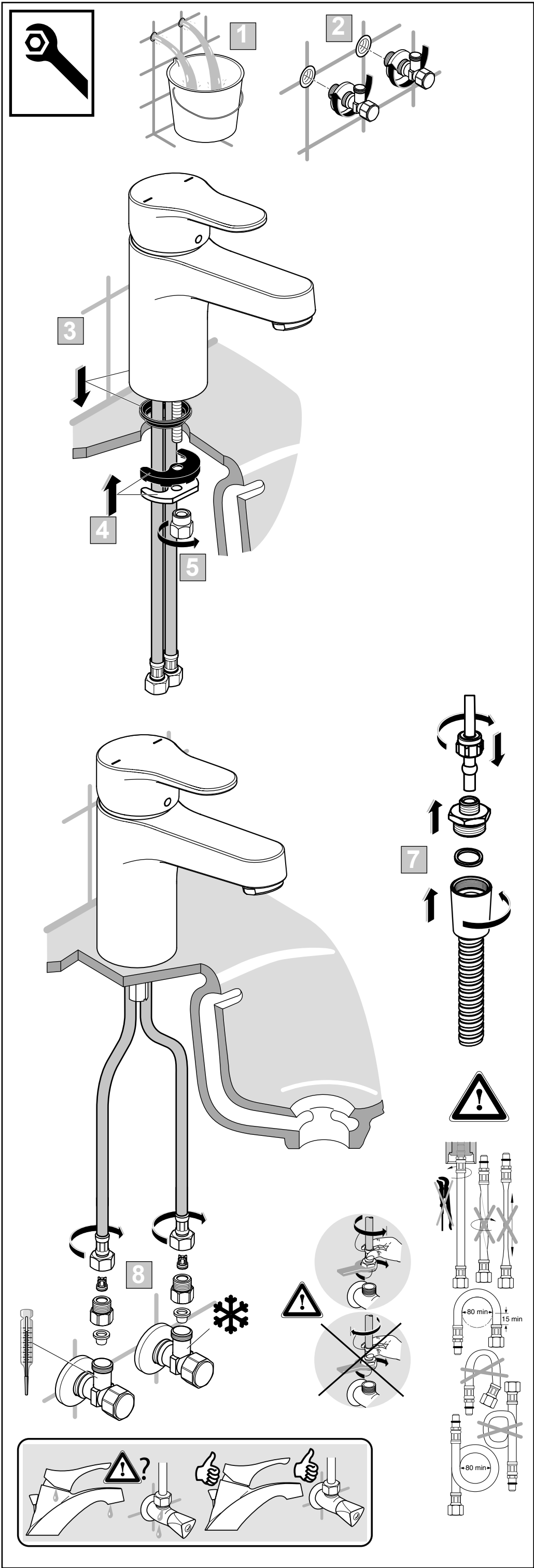


- 1 - B 961852 XX
- 2 - A 963751 NU
- 3 - B 961373 XX
- 4 - B 961374 NU
- 5 - A 861181 NU
- 6 - B 961491 NU
- 7 - E 960059 NU
- 8 - B 960883 XX
- 9 - A 964520 NU
- 10 - F 960469 XX
- 11 - B 960535 NU
- 12 - B 960844 NU
- 13 - A 1516 XX
- 14 - B 9467 XX
- 15 - B 961434 NU
- 16 - B 961788 XX



04.2024 / B565248





**1** Disassembly of the cartridge.

**2** Reassembly of the cartridge.

**Operating Parameters Table:**

P	T	MAX. 80	Q (3 bar)					
			0	1	2	3	4	5
			°C	°C	°C	°C	°C	°C
0,3 MPa 3 bar	50°C	15°C	50	49	44	40	35	33
	65°C	15°C	65	63	57	50	44	40
	85°C	15°C	85	83	74	64	56	50

	P	bar		MAX. 10		MAX. 80		Q (3 bar)
	T	°C		1		65		l/min
						40		3,8